

# **LEADTEK Navigator for Palm PDA**

## **User's Manual**

(GPS Monitor for Palm version)

## Contents

1. INTRODUCTION.....	1
2. INSTALLING NAVIGATOR FOR PALM PDA .....	1
3. OPERATION OF THE NAVIGATOR FOR PALM PDA .....	3

## 1. Introduction

The Leadtek Navigator is the software of GPS monitor. It is used to test and observe your GPS receiver especially all Leadtek's GPS products. This software has easy installing and operating features. Therefore, the user can be easily to use the software under Palm operation system.

## 2. Installing Navigator for Palm PDA

<Note> You can download this software through our website, [www.leadtek.com.tw](http://www.leadtek.com.tw).

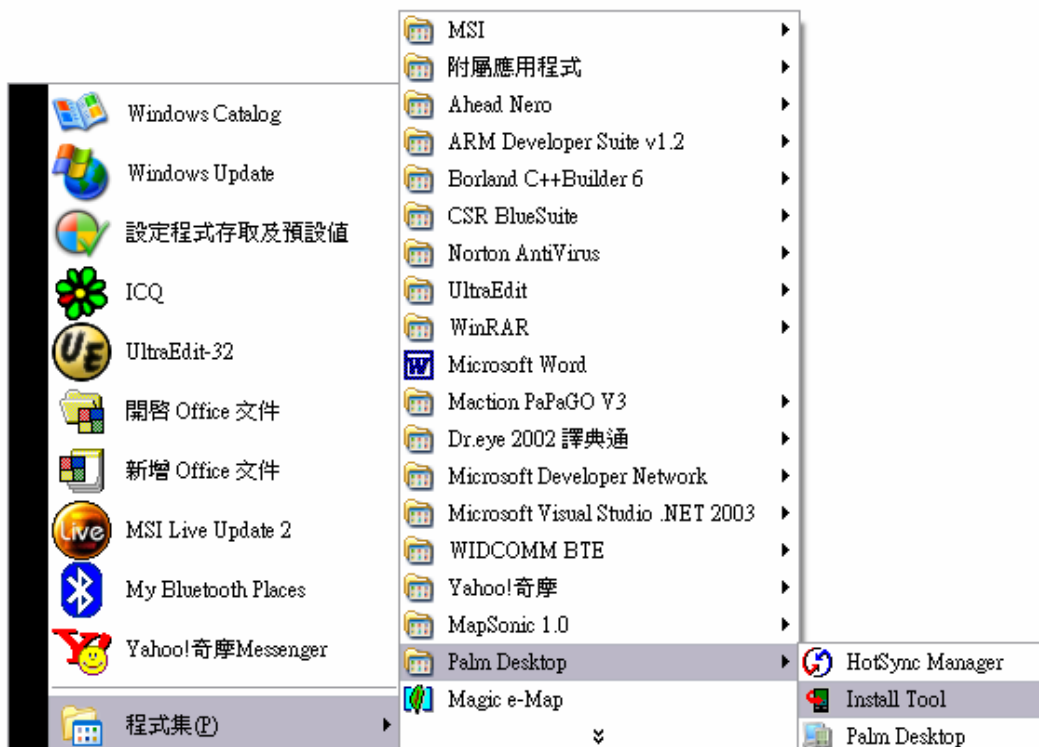
### Step 1.

Make sure that there have been HotSync program installed in the computer.



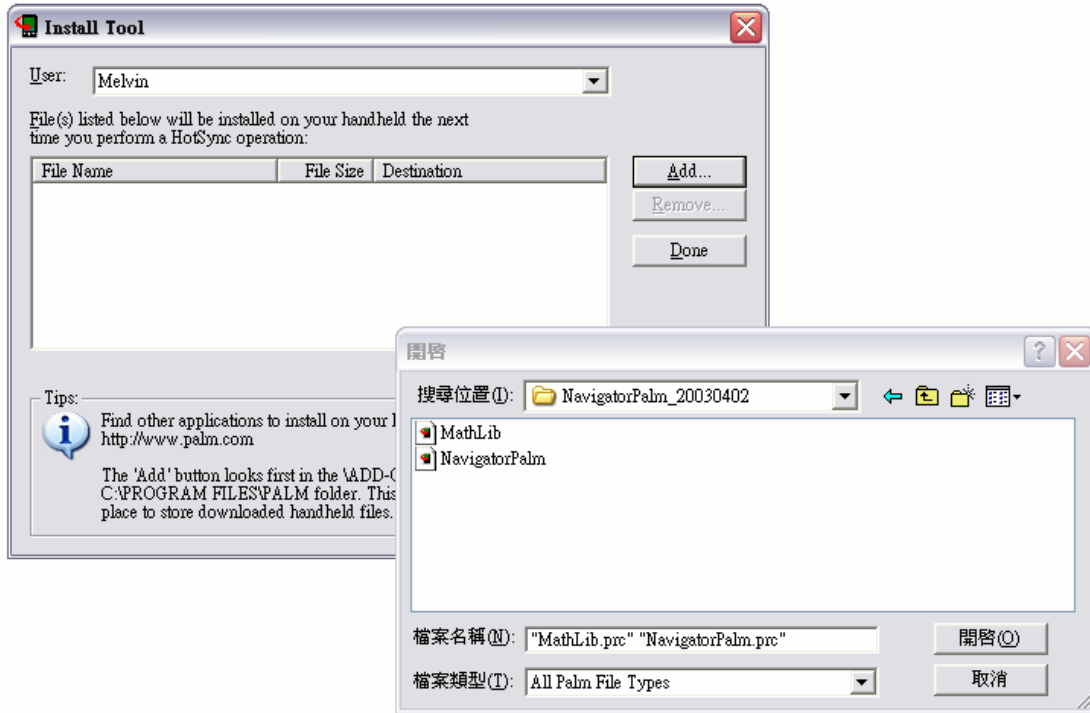
### Step 2.

Select the Install Tool which is installed with HotSync and will be shown in Palm Desktop Program Files.



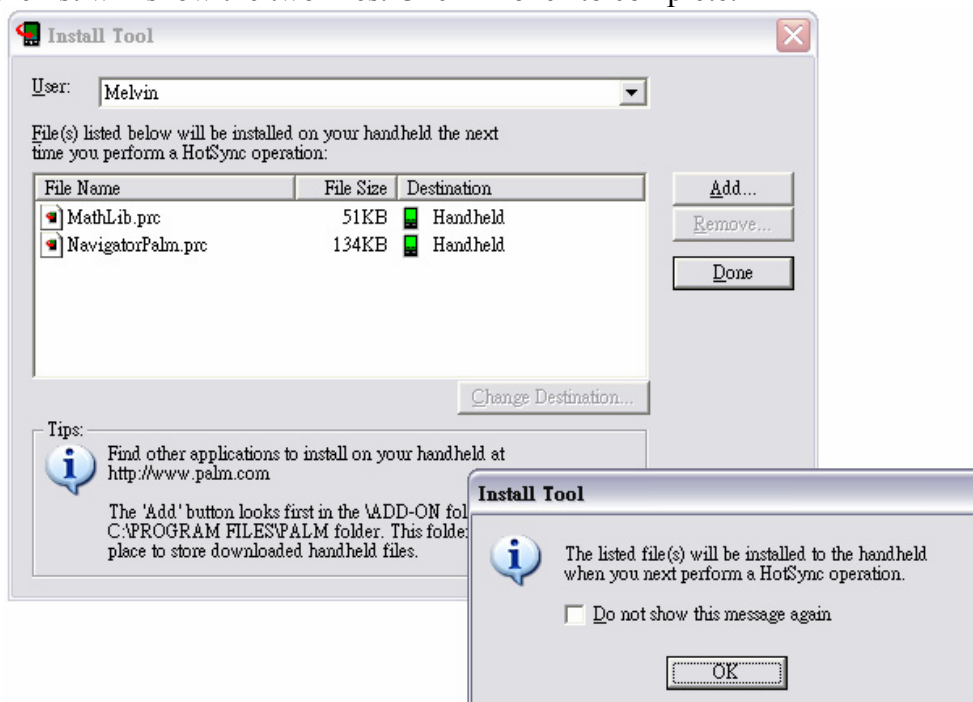
**Step 3.**

In Install Tool, the user can select the target programs and install them on their Palm PDA. Push Add button to select the target file which should be in \*.prc format. For Navigator Palm, select “Mathlib.prc” and “NavigatorPalm.prc”.



**Step 4.**

Then the list will show the two files. Click “Done” to complete.



**Step 5.**

Make sure that the Palm PDA have linked to the computer and push the Synchronize button on the cradle. Finally the software will be installed to the PDA.

### 3. Operation of the Navigator for Palm PDA

The Palm Navigator allows you to control the function of the module using an easy-to-use application.

In order to run this software, please click **the Navigator icon**.



#### Application Main Screen

When you run the application, the main screen appears as shown in the figure below:

The main screen includes three major parts:

**1. Menu bar**

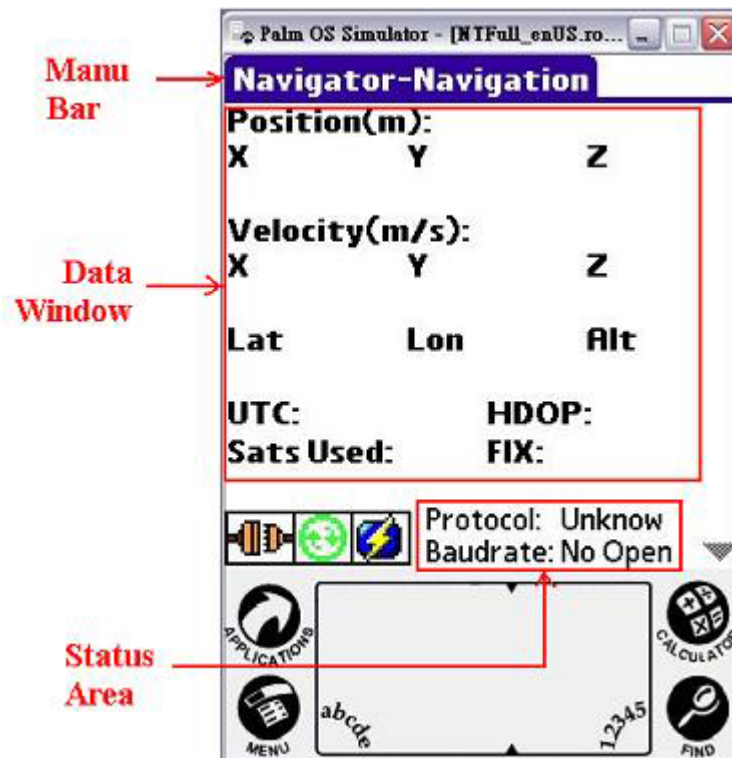
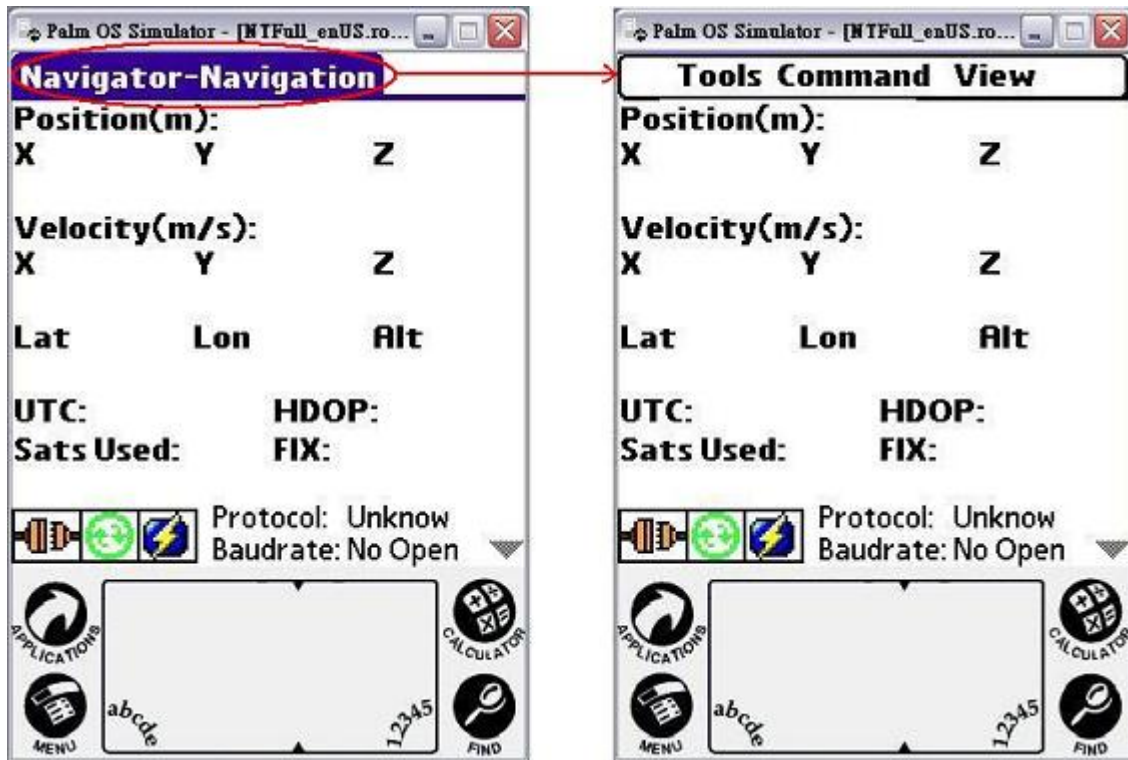
Provide accesses to all information and setting options. Please click the area and pop up the function menu. See next page will show the result.

**2. Status area**

Show the current status, including baud rate and protocol of the connection with the GPS.

**3. Data window**

Show the contents of each screen.



**Reading Status Area**

Show the current status of connection with the GPS.

◆ **Protocol:**

**(1) NMEA:**

The data being received is in NMEA protocol.

**(2) SiRF:**

The data being received is in SiRF Protocol.

**Descriptions of Function Icons.**

◆ **Baudrate:**

It shows baud rate of the data transmitting.

◆ **Disconnect:**



The GPS is not connected.

◆ **Connect:**



The GPS is connected.

◆ **Synchronization:**



This is an active synchronization button.

◆ **Cold Start:**



This is an cold start button for GPS

◆ **Data incoming indicator:**



If the COM port is receiving data, the arrow will show flash.

**Configuration Tools**

On the menu bar click **Tools**. A menu with the following options appears (see the figure on the left below):

- Port Setting**
- Connect**
- Auto Detect**
- Disconnect**
- About**

**Port Setting**

Select “**Port Setting**” from the **Tools** menu and the Port Setting screen appears. It allows you to set the GPS protocol and the connecting port.



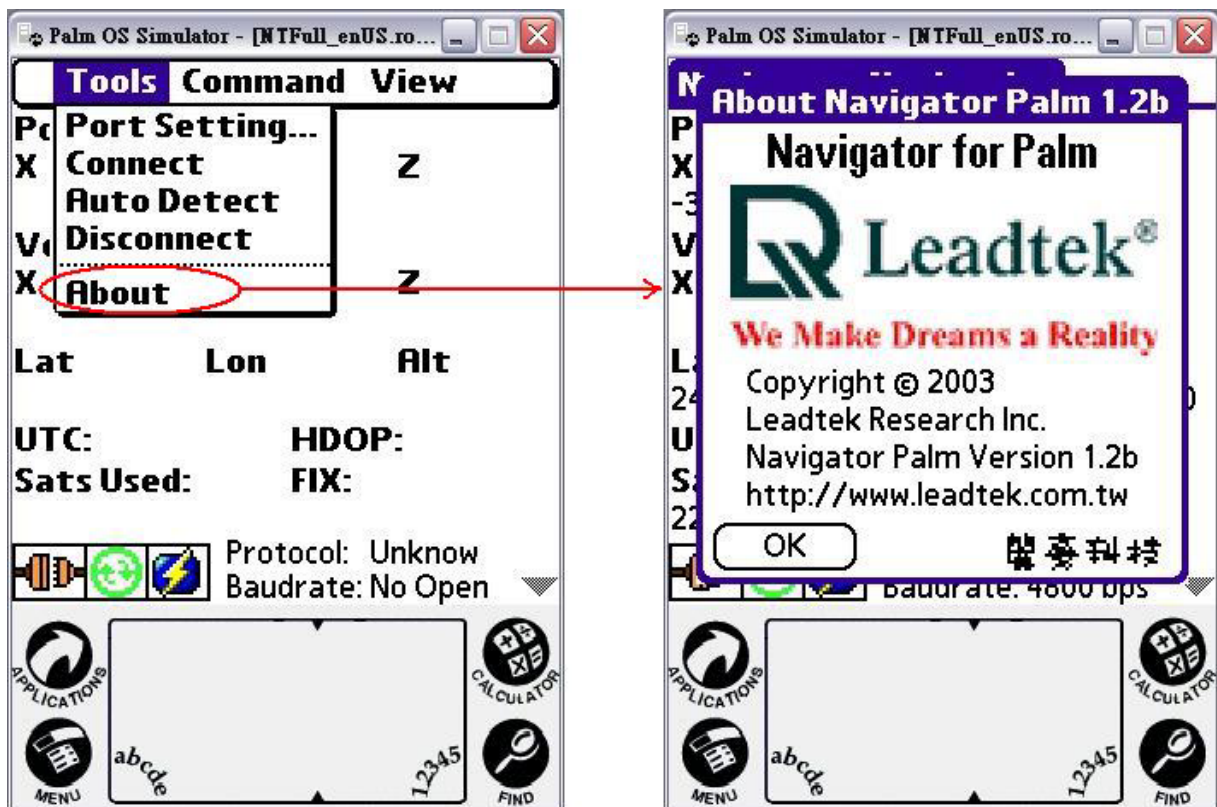


## Connect, Disconnect

Select “Connect” from the **Tools** menu and the GPS is connected. Otherwise, select “Disconnect” from the **Tools** menu and the GPS is not connected.

## About

Select “About” on the **Tools** menu to view the copyright and version information.

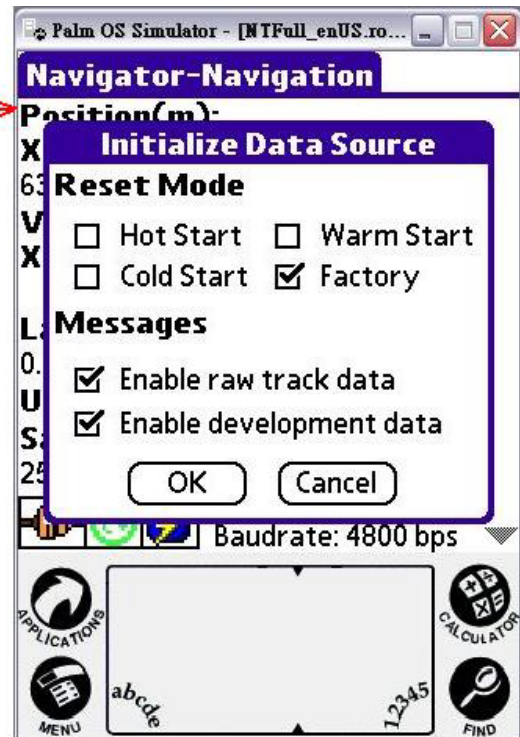


## Command

Select “Command” and an additional menu bar appears on the bottom of the data window that includes 3 tabs: **Initialize Data Source**, **NMEA**, and **SiRF**.

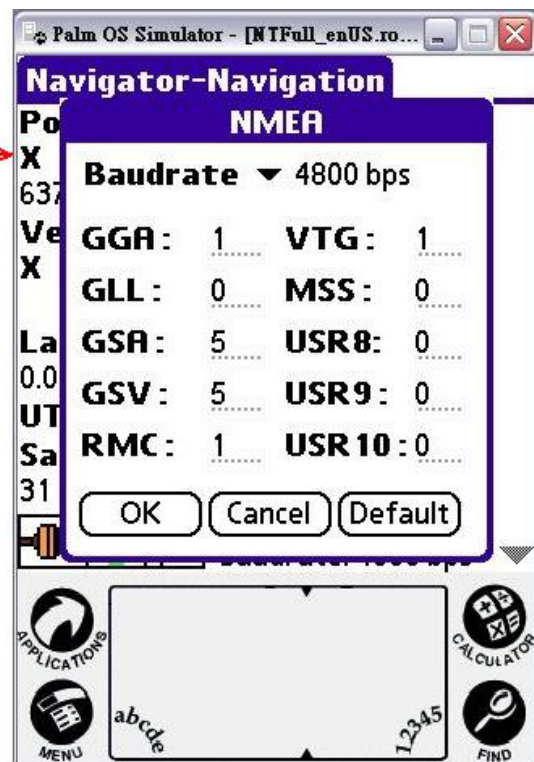
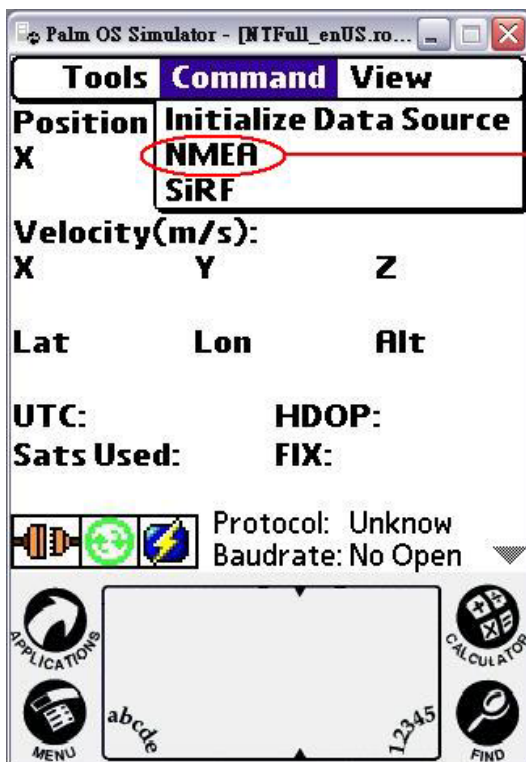
## Initialize Data Source

Select “**Initialize Data Source**” from the **Command** menu and initialization screen appears. It allows you to set the cold start, warm start, hot start and other parameters.



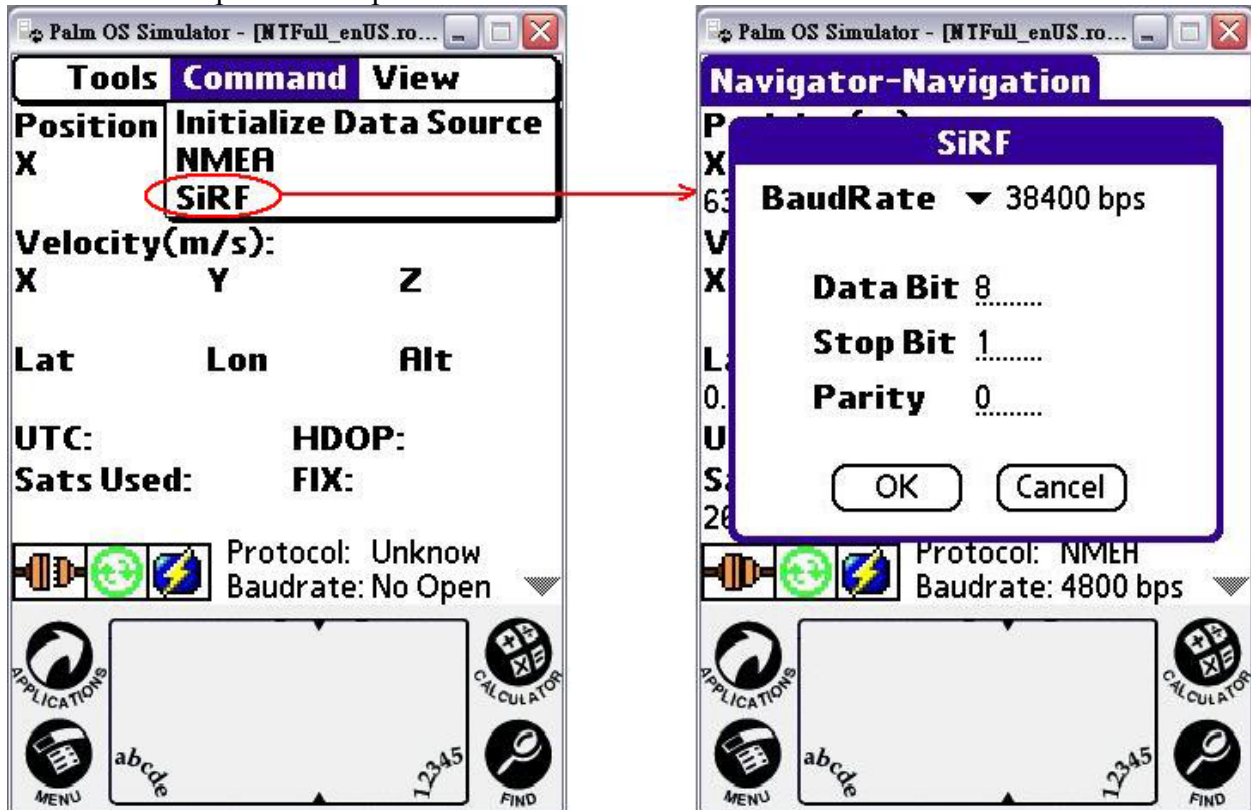
## NMEA

Select "NMEA" from the **Command** menu and the following screen appears. It allows you to set the parameters of NMEA protocol output.



## SiRF

Select “SiRF” from the **Command** menu and the following screen appears. It allows you to set the parameters of SiRF protocol output.

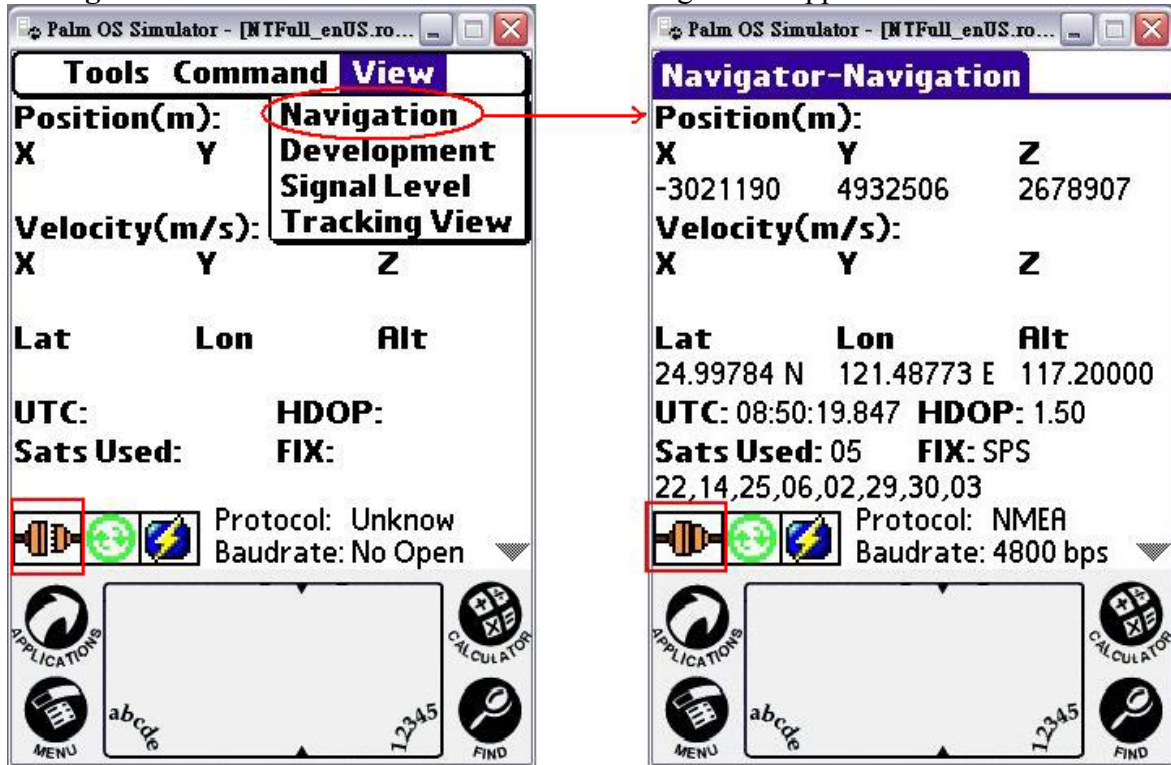


## Navigation Messages

On the menu bar click **View**. A menu with 4 options appears as shown including **Navigation**, **Development**, **Signal Level**, **Tracking View**.

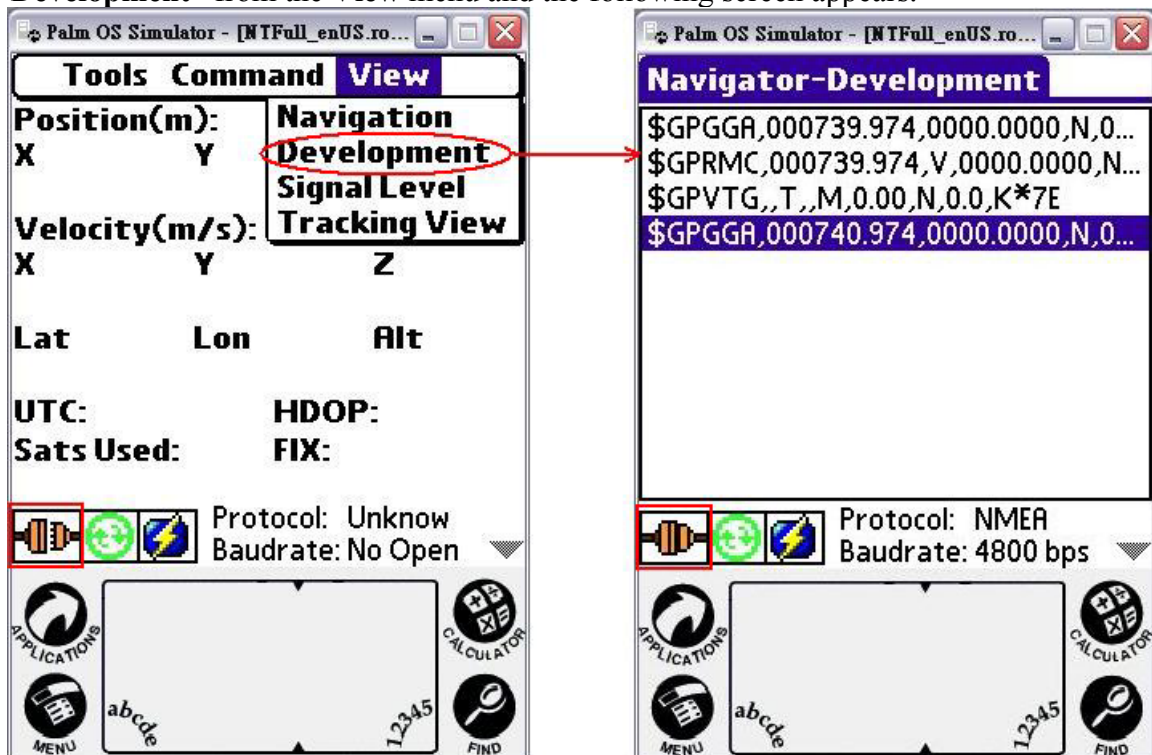
## Navigation

Select “Navigation” from the View menu and the following screen appears.



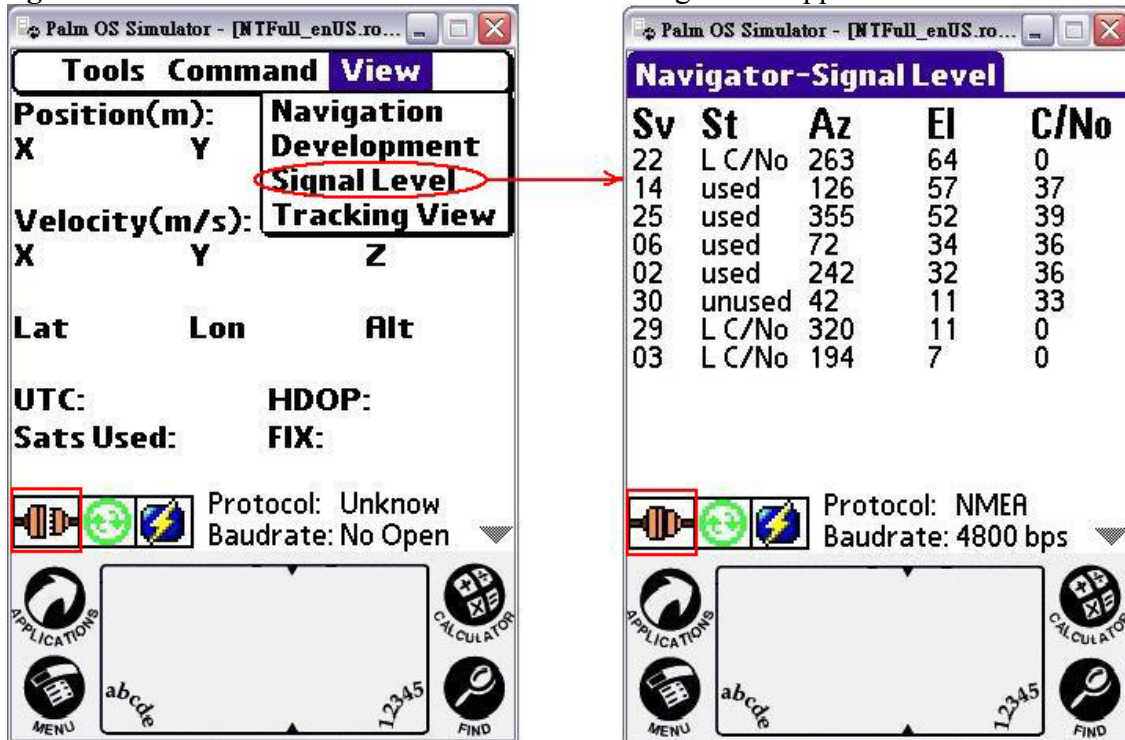
## Development

Select “Development” from the View menu and the following screen appears.



## Signal Level

Select “Signal Level” from the View menu and the following screen appears.



## Tracking View

Select “Tracking View” from the View menu and the following screen appears.

